



Maths

Multiplication and Division

Twinkl Tours



Aim

- I can solve problems involving all four operations.

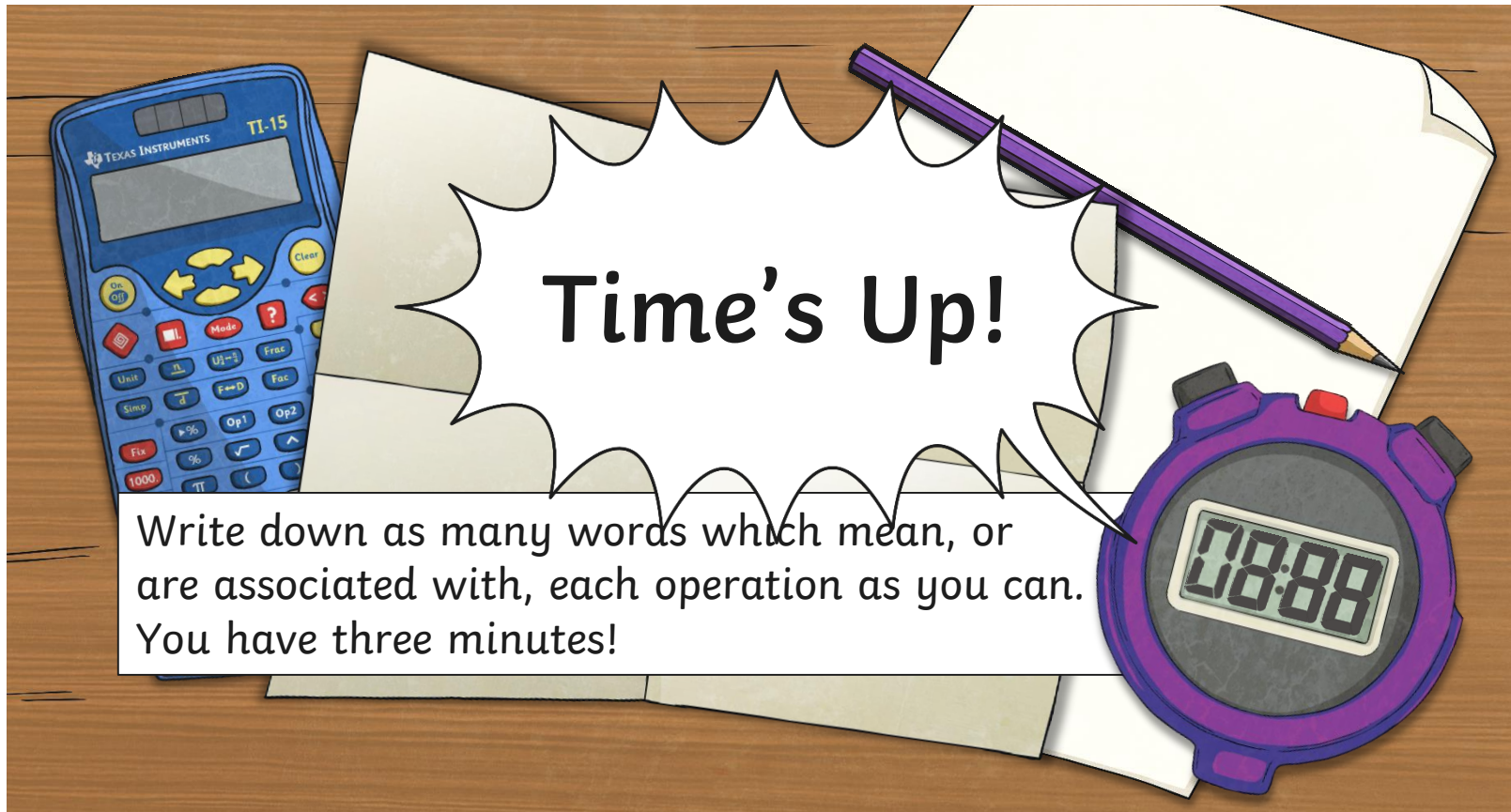
Success Criteria

- R - I can read the question carefully, identifying key words.
- U - I understand what the question is asking me to do.
- C - I can choose the correct method needed to answer the question.
- S - I can solve the problem using written calculation methods.
- A - I can answer the original question.
- C - I check my answer using inverse calculations.

Keywords



Fold your piece of paper into quarters.
Write add, subtract, multiply and divide in different quarters.



On Tour



Here at Twinkl Tours, we provide high-quality coaches to drive top pop and rock bands around the country when they are on tour.



Have You Packed Your RUCSAC?

What steps do we need to take when answering questions?



Check your answer.
Use the inverse to check your working out.

Tour Bus Trouble



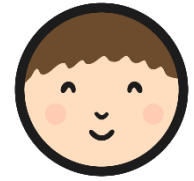
Let's use the RUCSAC method to solve this question.

The tour bus contains **15 seats** on the top deck. The width of the bus is **2.6m** and each seat has a **width of 48cm**. If an **aisle of 50cm** is left down the middle, **how many seats will fit in each row?** **Will all the rows contain the same number of seats?**

4 seats will fit in each row. There are 15 seats in total, so this will mean 3 rows of 4 and 1 row of 3.

Check your answer.
Use the inverse to check your working out.

Twinkl Tours



Use your marvellous maths skills to complete these activities:

★ ★ ★ 4) 4 band members per minute. If the time to have a shower is 15 minutes, how long will it take to have a shower?

I can solve this problem by using $4 \times 15 = ?$

Can you solve these Twinkl Tours problems? Remember RUCSAC and show your work.

5) The band have two half an hour before the show and 9 minutes to walk to the venue. How long do they have to get ready?

6) The band are playing 12 songs. They will need 2 minutes between the songs. How long will the show last?

★ ★ ★ 4) 3 band members per minute. If the time to have a shower is 15 minutes, how long will it take to have a shower?

I can solve this problem by using $3 \times 15 = ?$

Can you solve these Twinkl Tours problems? Remember RUCSAC and show your work.

5) The band have 2 hours before the start time to walk to the venue. How long do they have to get ready?

6) The band are playing 12 songs. They will need 2 minutes between the songs. How long will the show last?

Twinkl Tours

I can solve word problems involving all four operations.

Match the word problem with the calculation needed to solve it, answer it and don't forget to check your calculation.

Place card here.	Calculation	Answer	Check It
Place card here.	$7 \times 6 = ?$ $? \div 12 = *$		
Place card here.	$8 \times 5 = ?$ $? \div 16 = *$		

★ Place card here.

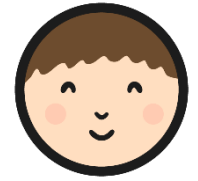
★ Place card here.

★ Place card here.

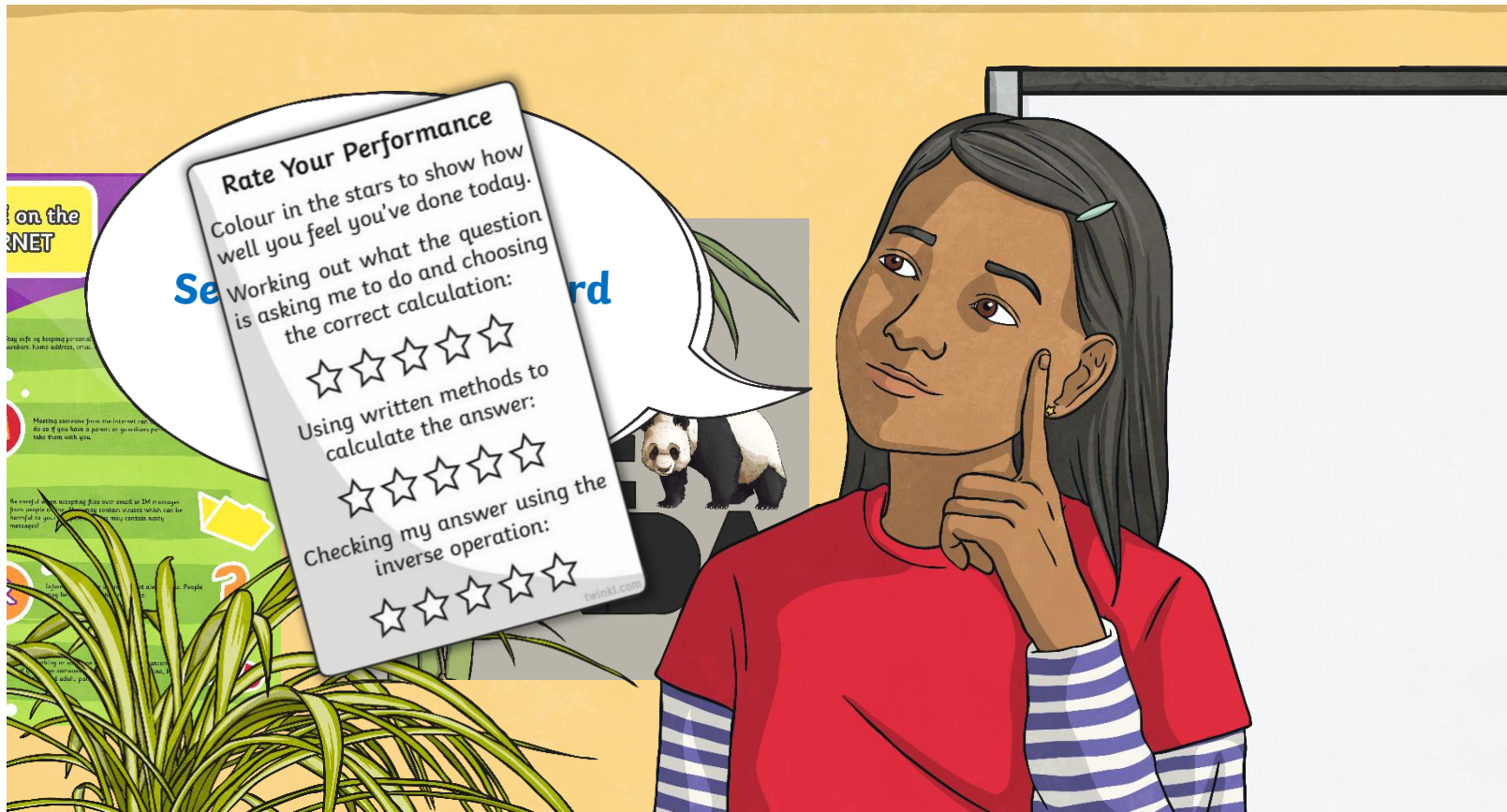
If each of the 7 band members asks for 6 bottles of water a day and the bottles come in packs of 12, how many packs should Twinkl Tours put on the tour bus?

The band have 2 hours before the show starts. They have to be backstage half an hour before the start time. It will take them about 25 minutes to eat their dinner. How much time do they have left to get changed for the show?

Rate Your Performance



How did you do today?



Rate Your Performance

Colour in the stars to show how well you feel you've done today.

Working out what the question is asking me to do and choosing the correct calculation:



Using written methods to calculate the answer:



Checking my answer using the inverse operation:



Aim



- I can solve problems involving all four operations.

Success Criteria

- R - I can read the question carefully, identifying key words.
- U - I understand what the question is asking me to do.
- C - I can choose the correct method needed to answer the question.
- S - I can solve the problem using written calculation methods.
- A - I can answer the original question.
- C - I check my answer using inverse calculations.

